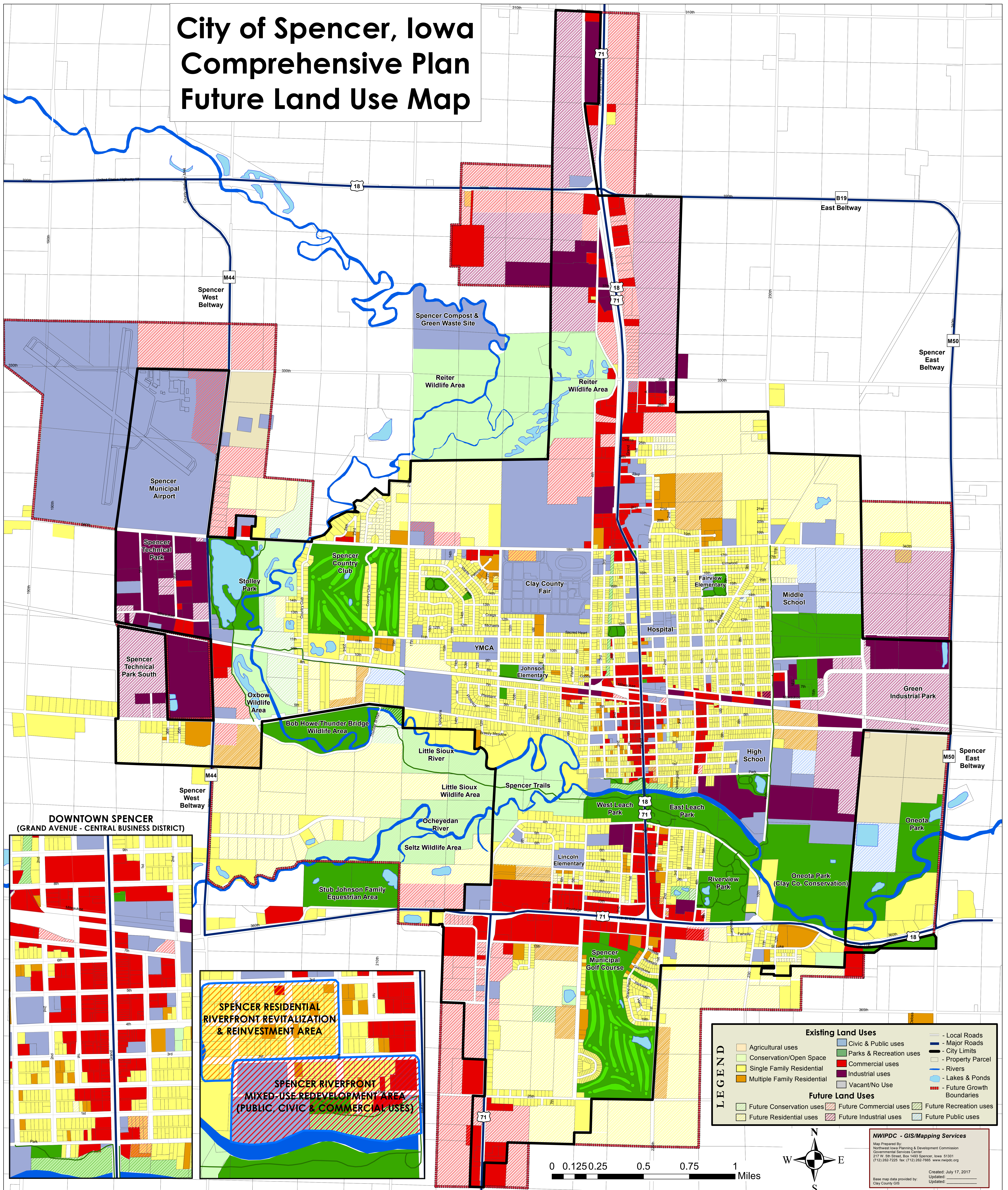
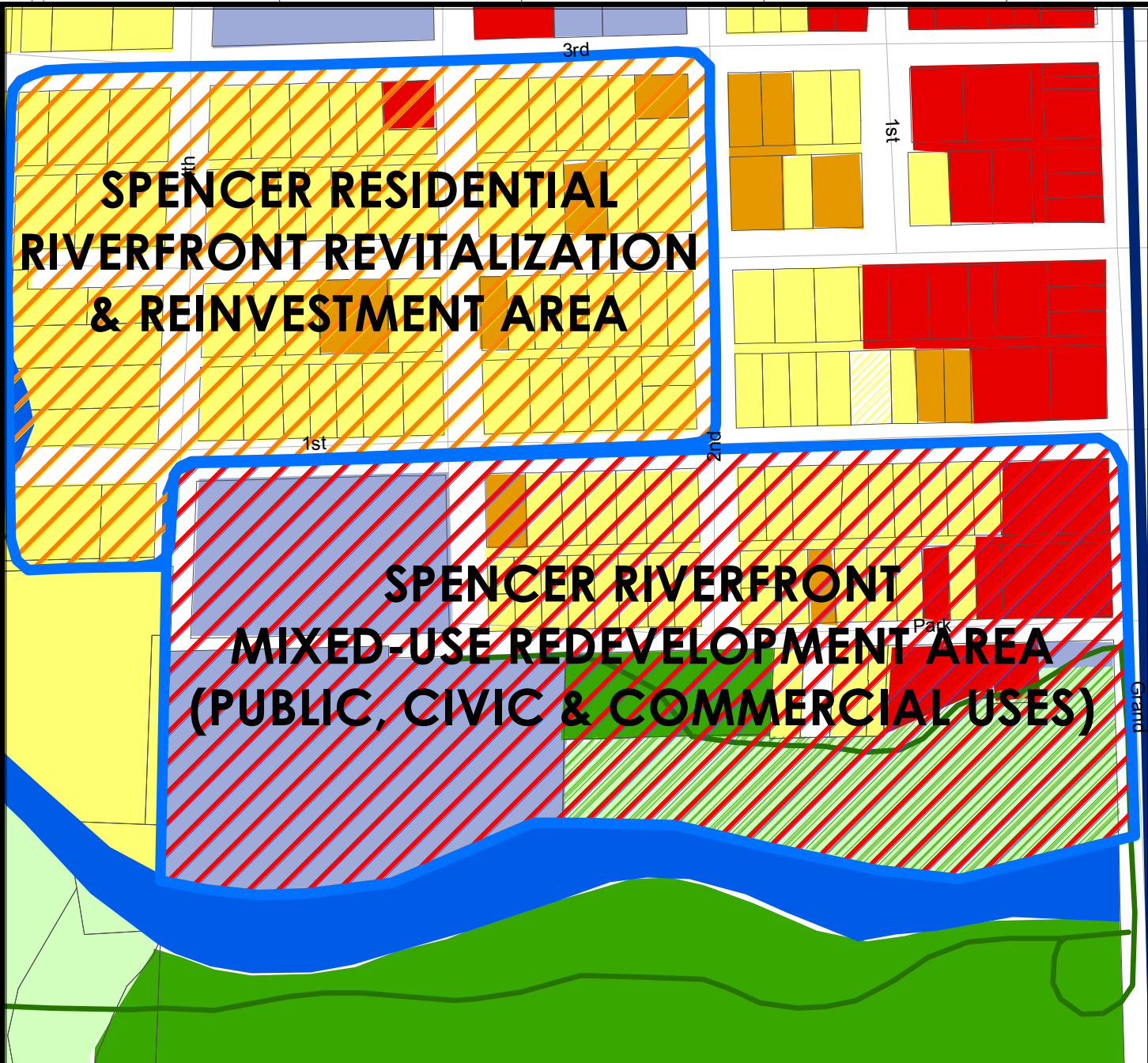


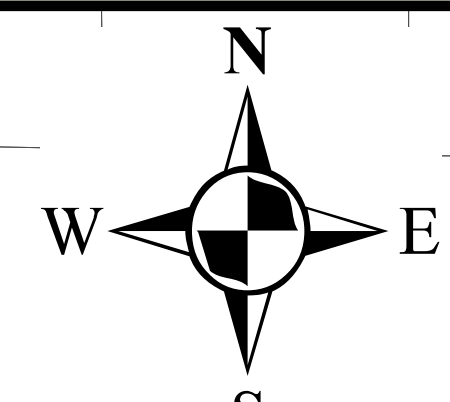
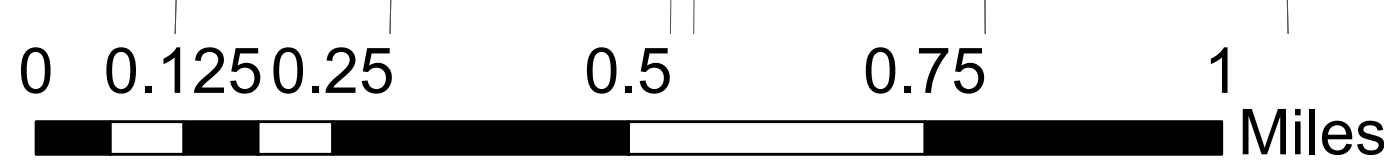
City of Spencer, Iowa Comprehensive Plan Future Land Use Map



DOWNTOWN SPENCER (GRAND AVENUE - CENTRAL BUSINESS DISTRICT)



Existing Land Uses		Future Land Uses	
	Agricultural uses		Future Conservation uses
	Conservation/Open Space		Future Residential uses
	Single Family Residential		Future Commercial uses
	Multiple Family Residential		Future Industrial uses
	Civic & Public uses		Future Recreation uses
	Parks & Recreation uses		Future Public uses
	Commercial uses		
	Industrial uses		
	Vacant/No Use		



NWIPDC - GIS/Mapping Services
 Map Prepared By:
 Northwest Iowa Planning & Development Commission
 Governmental Services Center
 217 W. 5th Street, Box 1493 Spencer, Iowa 51301
 (712) 262-7225 fax: (712) 262-7665 www.nwipdc.org
 Created: July 17, 2017
 Updated: _____
 Base map data provided by:
 Clay County GIS