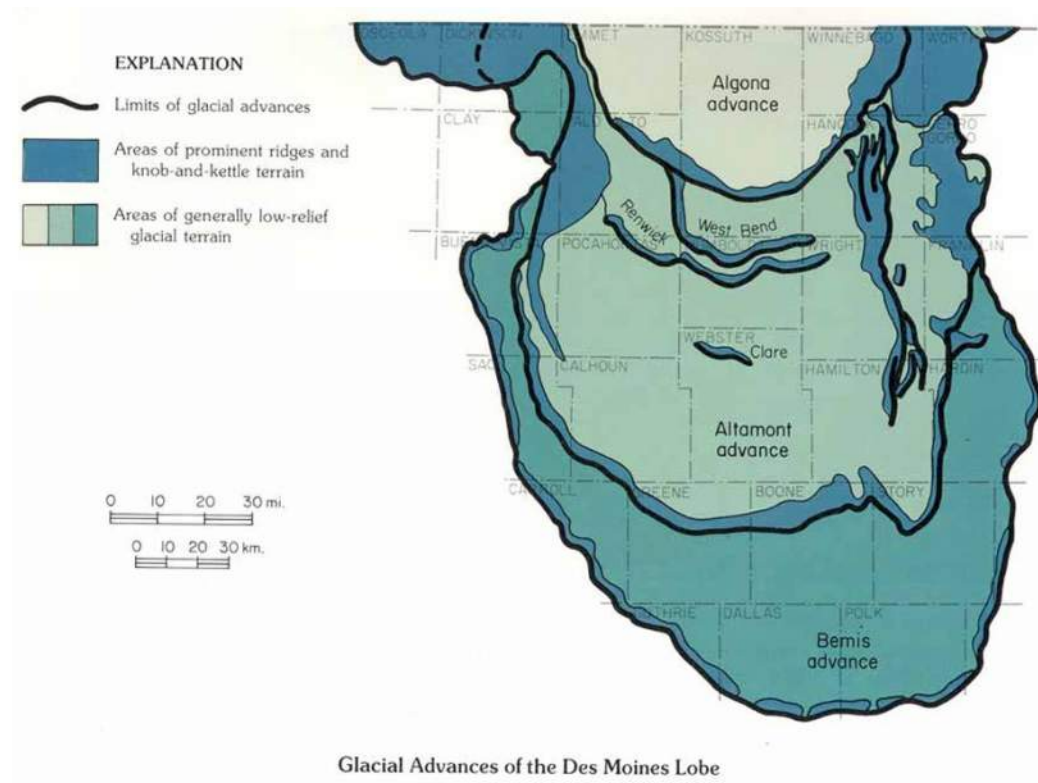
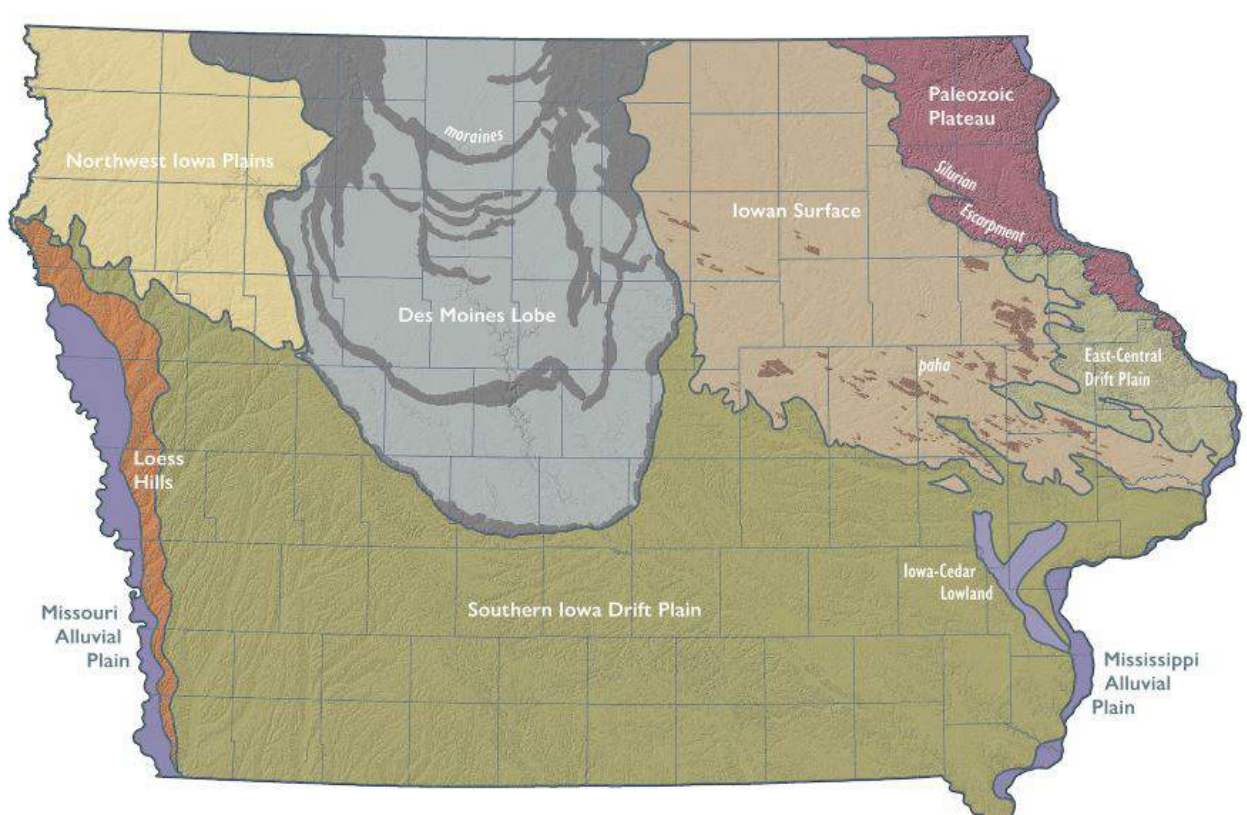
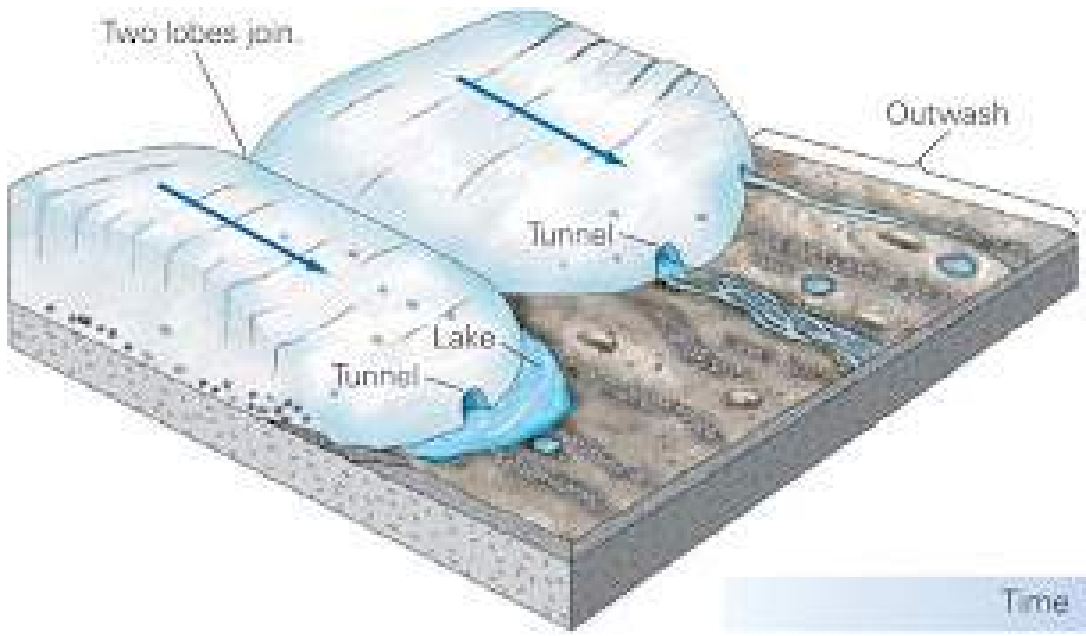
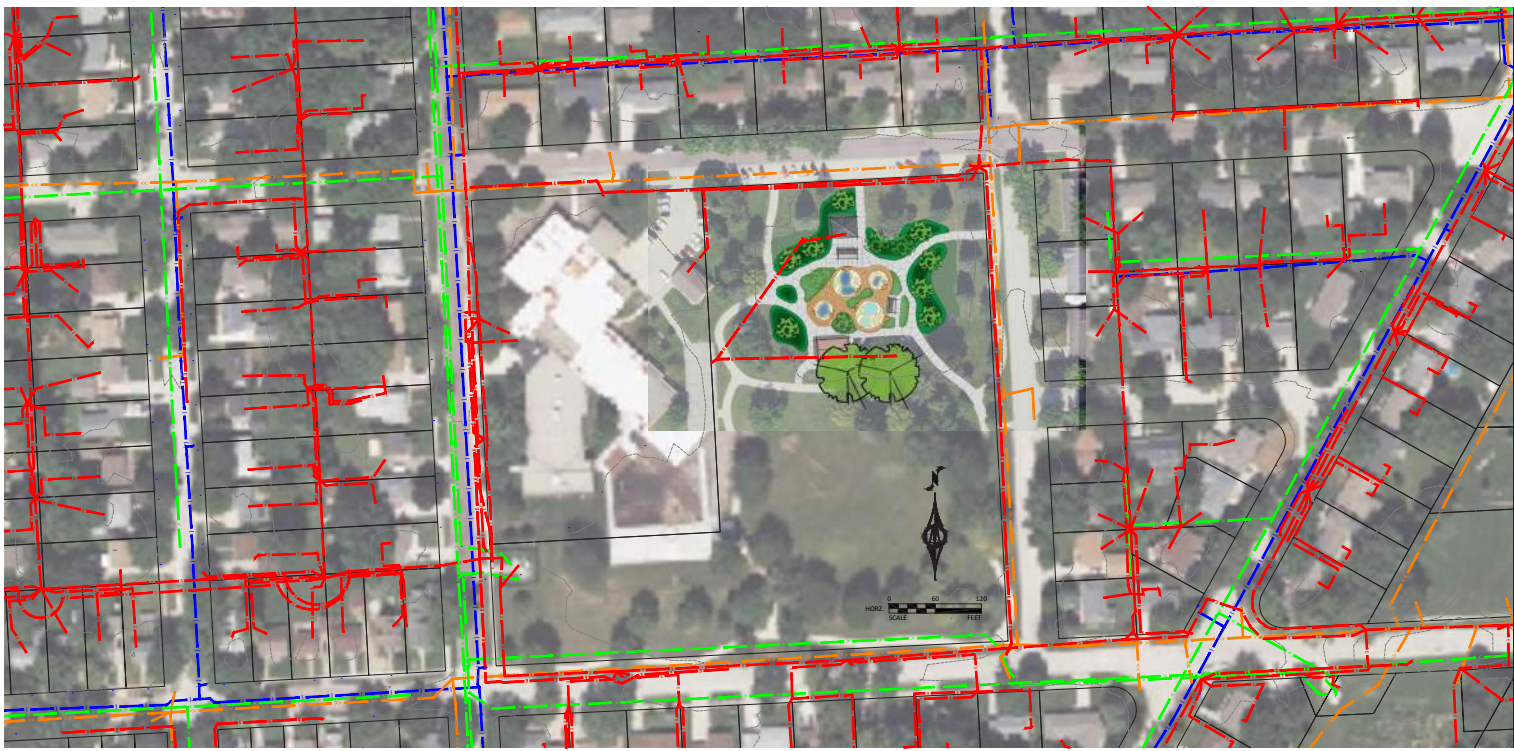


CONCEPT 1



CONCEPT 2



(a) The ice in continental glaciers flows toward the toe; sediment accumulates at the base and at the toe of the ice sheet.



(b) Several distinct depositional landforms form during glaciation; some developed under the ice and some at the toe.



POTHOLE PRAIRIE



PRAIRIE WETLAND



SIOUX QUARTZITE BOULDERS

AQUATIC CENTER SPLASH PAD CONCEPT







LEARN,
DISCOVER,
PLAY!

FUN BUILDS
SPENCER SPLASH PAD,
SPENCER, IA
 **WATERPLAY**

Anticipate
Build anticipatory skills by watching and perceiving when the dumping bucket will tip over for a MEGA SPLASH!



FUN BUILDS
SPENCER SPLASH PAD,
SPENCER, IA
 **WATERPLAY**



Movement in play
creates a sense of space
and place to keep bodies
strong and healthy.

FUN BUILDS
SPENCER SPLASH PAD,
SPENCER, IA
 **WATERPLAY**



FUN BUILDS
SPENCER SPLASH PAD,
SPENCER, IA
 **WATERPLAY**

PLAY ZONES

ADVENTURE ZONE



- LADY BUG SOAKER
- DOUGHNUT GROUND SPRAY

EXPLORATION ZONE



- MORNING GRASSES
- DEW DROP
- ANTS CRAWLING GROUND SPRAY
- CHARLOTTE
- GEYSER playPHASE GROUND SPRAYS
- BLUE BOTTLE
- DAISY MAE WINDY

DISCOVERY ZONE



- FLUTTER
- MOP TOP GROUND SPRAY
- CRITTER 1 & 2
- POPPY BUD
- PUDDLE 1 & 2
- FOUNTAIN MOUNTAIN GROUND SPRAY
- CORN POPPY

DEVELOPMENT ZONE



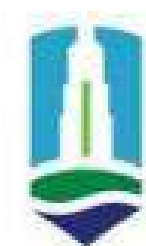
- CONFETTI GROUND SPRAY
- GUSHER GROUND SPRAY
- GECKO CRAWLING GROUND SPRAY
- FROG CRAWLING GROUND SPRAY
- SURF STONE
- GEYSER playPHASE GROUND SPRAY

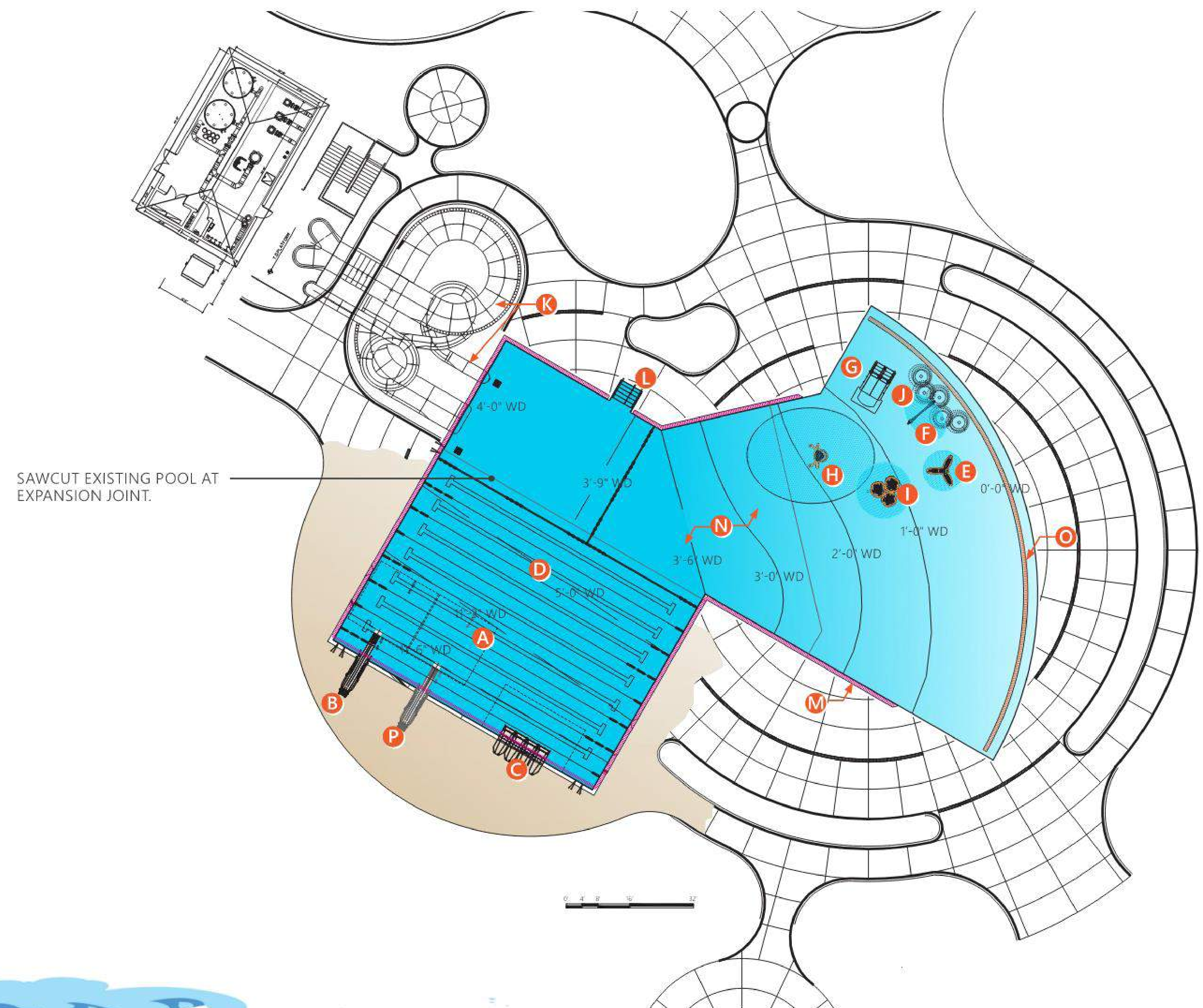


FUN BUILDS

SPENCER SPLASH PAD,
SPENCER, IA

 **WATERPLAY**





WATER ATTRACTIONS

- A** 4,045 SF ADDITION TO POOL
- B** 1 METER DIVING BOARD
- C** 16' CLIMBING WALL (X4)
- D** NEW LAP LANES
- E** WATER TABLE
- F** WATER ARCH
- G** KIDDIE SLIDE
- H** DUMPING BUCKET
- I** CANOPY WATER SHOWER
- J** EXISTING WATER GEYSERS
- K** RESURFACE EXISTING SLIDES
- L** ADD ADA STAIR
- M** NEW PREFAB GUTTERS
- N** REFINISH EXISTING POOL (WALLS AND FLOORS)
- O** REPLACE ZERO DEPTH GUTTER GRATING
- P** OPTIONAL FUTURE 1 METER DIVING BOARD

CODE JURISDICTION

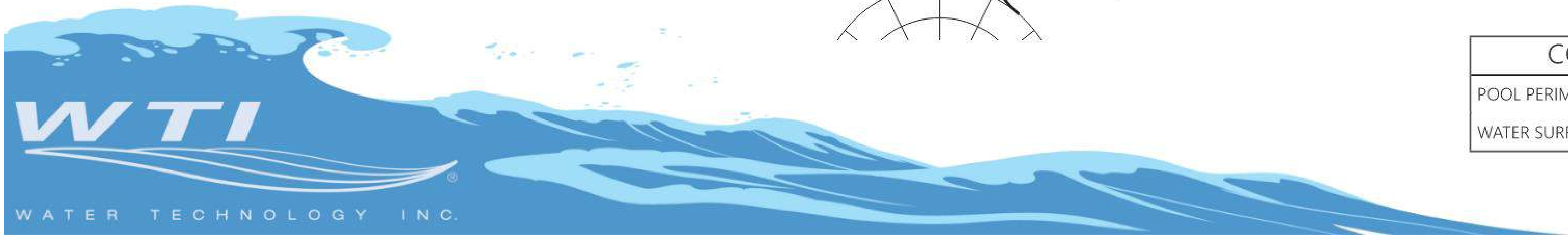
UNITED STATES, CLAY COUNTY,
SPENCER, IOWA

HEALTH & SAFETY CODE

- STATE CODE:
- IOWA ADMINISTRATIVE CODE CHAPTER 15
- SWIMMING POOLS AND SPAS
- MODEL CODE:
- INTERNATIONAL SWIMMING POOL AND
SPA CODE 2015

CONCEPT POOL DATA TABLE

POOL PERIMETER	560 LINEAR FEET
WATER SURFACE AREA	12,000 SQUARE FEET





WTI
WATER TECHNOLOGY INC.

December 06, 2023 | P. 3

